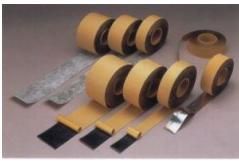


GlassEco® Environment-friendly, Energy-saving & Longer-life Coating from Japan.

Plan① Roof/Metal



Waterproof asphalt tape

※ Elastic pure silicone coating provides ANTI-CORROSIVE and WATER-PROOF effects for 15-20 years or more.
It can even be easily applied on rusted surfaces after cleaning the area.
First, small holes and cracks must be covered with waterproof asphalt tape prior to application.

Keywords: Salt-damage protection, Anti-corrosion, Longer life durability, Metal roof waterproofing, Concrete roof waterproofing

GlassEco paints have 400% elasticity within the temperature range of -50℃ to 250 ℃.
With GlassEco paints, air can pass through the coating from inside, while shutting out rain from outside.
Possible to add heat shield property as an optional specification.
Corroded surfaces can also be coated to prevent corrosion from advancing.



Corrosion does not progress in the coated steel part.

Plan② Outside wall insulation (heat shield effect)



※ After cleaning the surface and fixing deteriorated parts, EcoGlass can be applied using a specified roller.

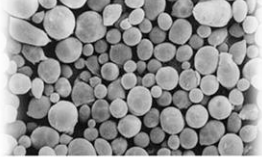
Keywords: Outside insulation, Salt-damage protection, Longer life durability, Crack prevention, Easy application

Optional glass-topcoating can add stain-resistance to the surface for a long time.

GlassEco paints contains special fine ceramic beads (volcanic ash beads) to create the high insulation (heat shield) effect.



Volcanic ash



Volcanic ash beads

GlassEco paints also contain fine nylon (polyamide) fibers that contributes to crack prevention.



The fine nylon fiber has been registered as a new technology with the Ministry of Land, Infrastructure and Transportation of Japan, and they have been applying this product various civil structures with concrete, etc.

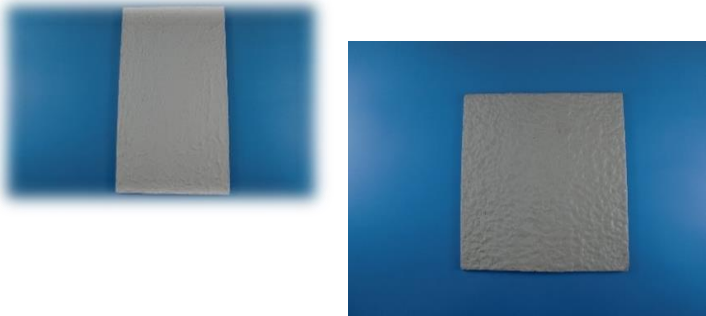


GlassEco coating is a very effective way to repair the damaged parts of road walls or skyway and prevent further degradation.

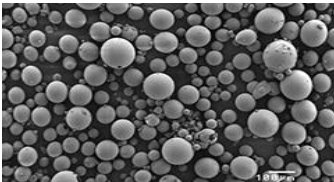


GlassEco® Environment-friendly, Energy-saving & Longer-life Coating from Japan.

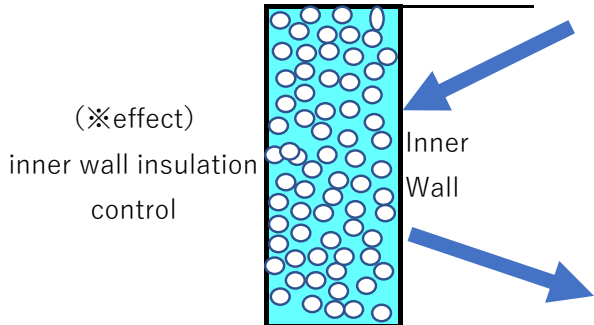
Plan③a Inner Wall (cooling effect)
Insulation Coating



This is a heat shield, heat insulation and heat control paint for indoor use.
Reduced odor during painting work, which immediately disappears soon after construction.
Elastic, flame-retardant, safe and does not emit toxic gases.
It contains abundant special ceramic beads and exhibits good thermal insulation.
Aircon cooling becomes much more effective and efficient.



Fine hollow ceramic beads



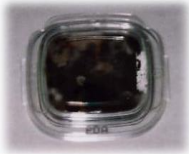
Plan③b Inner Wall (safety,deodorize, washability, Non flammable,Antibacterial, Anti-virus)
(Outer Wall OK)



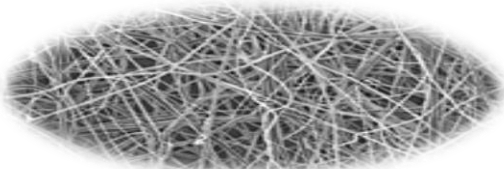
This product contains chitin nanofibers extracted and purified from crustaceans such as crabs and shrimps.
Inexpensive but has high durability due to inorganic paint.
It has spontaneous humidity control and can be said to be a natural air conditioner.
Flame retardant, non-polluting, safe and secure, water-based, solvent-free, inorganic, washability, antibacterial and antiviral



Antibacterial treated



Untreated antibacterial



Chitin nanofiber



※Option Insect / mosquito / pest etc. Repellent

It is possible to add insect repellent effects against mosquitoes, cockroaches and flies, etc. to the painted surfaces of a and b as an option.
The expected effect is 1-1.5 years, but you can spray only the repellent solution after a few years to restore the effect.



MGS

Mosquito Guard System

By GlassEco®

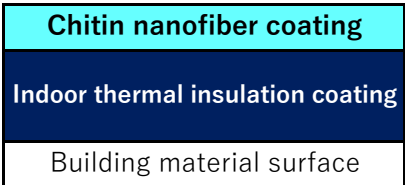
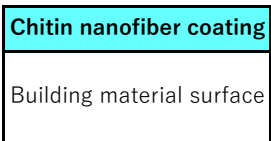
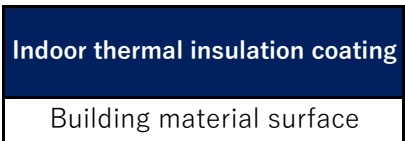
Safe and secure because it is a special herbal solution mix!

※Ants painting for houses is also available. (It will be another specification)

※Plan③ : a+b MIX
Option Plan

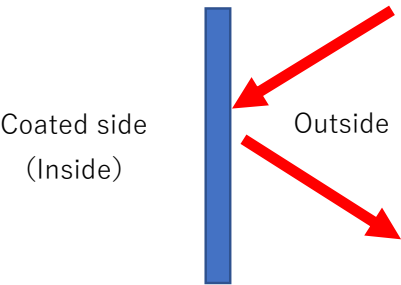
By combining the two coatings, a more comfortable indoor space can be created.

(Hyper energy saving effect)

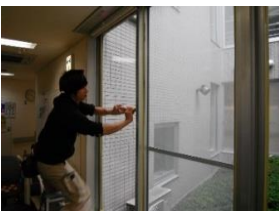


GlassEco® Environment-friendly, Energy-saving & Longer-life Coating from Japan.

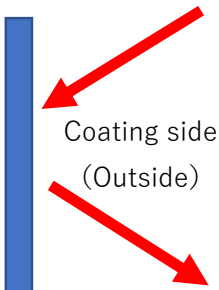
Plan④a Window glass heat insulation
Window glass inside



Applied on the inside of the window with a special sponge and special cloth.
Eliminates heat by high UV cut effect and near infrared cutoff effect.
Low odor and no bad smell after construction.
Transparency of the glass is not affected, and vision through the window does not change.
There is no drastic temperature difference between the inside and outside thus condensation hardly forms.
Aircon cooling and heating efficiency is greatly improved. Energy saving rate calculation: about 25% to 30%
Expected durability: about 10 years (Be careful not to scratch when cleaning)



Plan④b Window glass heat insulation & Improved antifouling property
Window glass outside



※Heat cut effect and self-defense from dirt



Spray application on the outside of the glass window.
It is possible to provide both heat shielding effect and photocatalytic antifouling effect at the same time.
The odor during work is very low and safe.
It has very high self-cleaning properties, and can reduce window cleaning costs.
We can demonstrate the prevention of dirt. Please take a look.
It has the same antifouling effect as the highly durable photocatalytic effect used for the outer wall.

Please see the video→

(Self-cleaning effect)

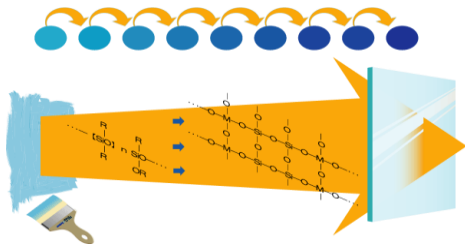


←(Spray construction method)



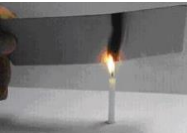
* It is possible to apply only the photocatalytic anti-stain property on the general exterior wall coating.

Plan⑤ HLG System
At normal room temperature,
Glassy coating system



(please see attached leaflet)

Forms vitreous coats on various substrates.
Various parts such as around water, floor and outer wall are protected for a long time.



Surface flame retardant, high hardness / bending resistance, high antifouling / release properties, High water and oil repellency.

